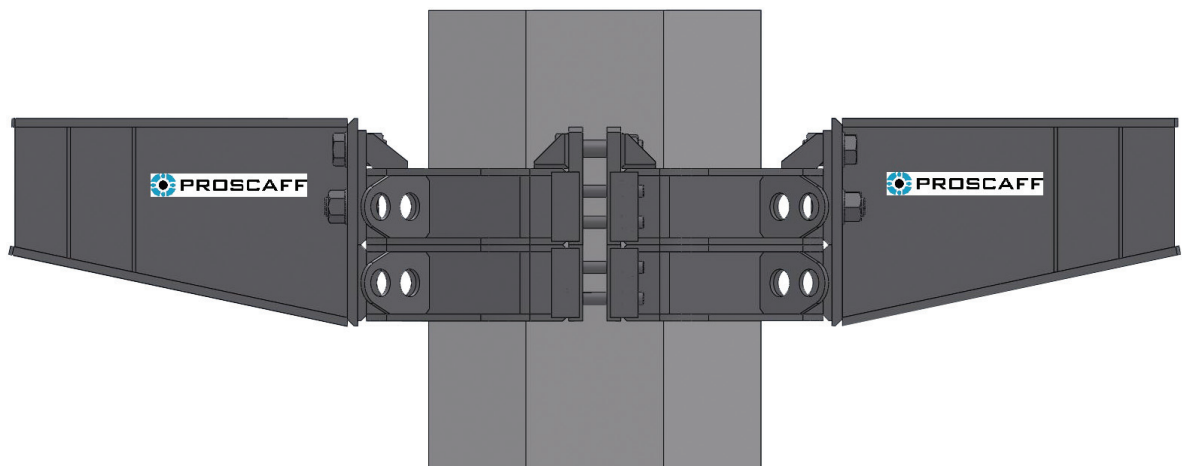




PROSCAFF NORTH AMERICA INC.
FRICION COLLAR SHORING

INTRODUCTION

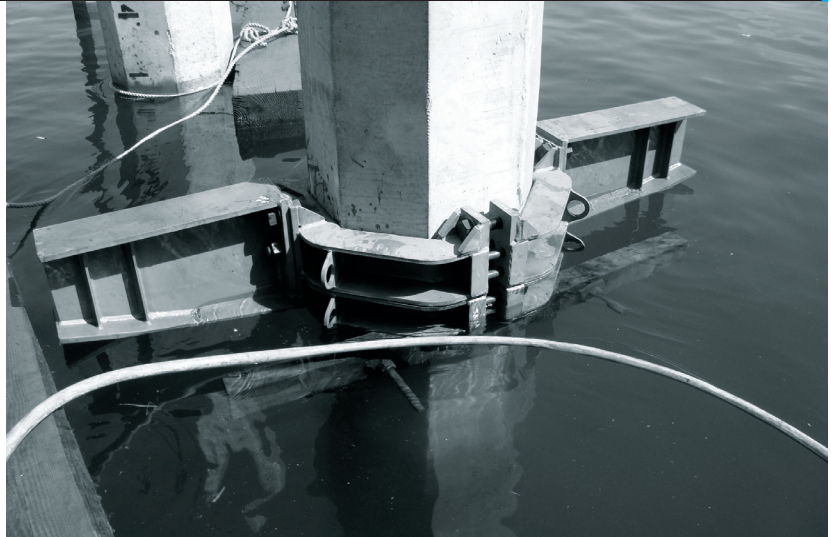
Used in marine applications or where shoring from below is not possible.



Product Capacity

PRODUCT CAPACITY ON EACH SIDE

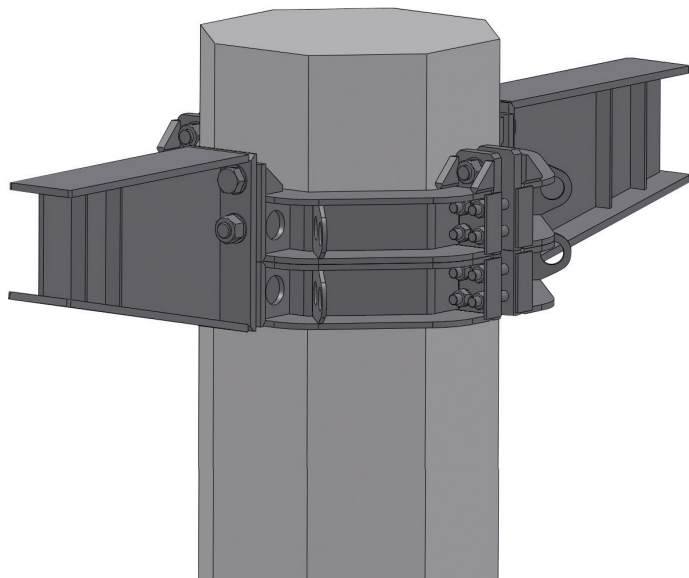
- 100,000 lbs
- Total: 200,000 lbs FOS 2.5:1
- If used in pairs + fillers, capacity increases to 150,000 lbs on each side, total 300,000 lbs.



General Specifications

GENERAL SPECIFICATIONS

- Pillar diameter: 24", or made to specification.
- Side Support span on one side 30", or made to specification
- Overall product span: 84.25"
- Total weight: 690 lbs, separated in 6 components
 - 2 upper collar halves
 - 2 lower collar halves
 - 2 side supports



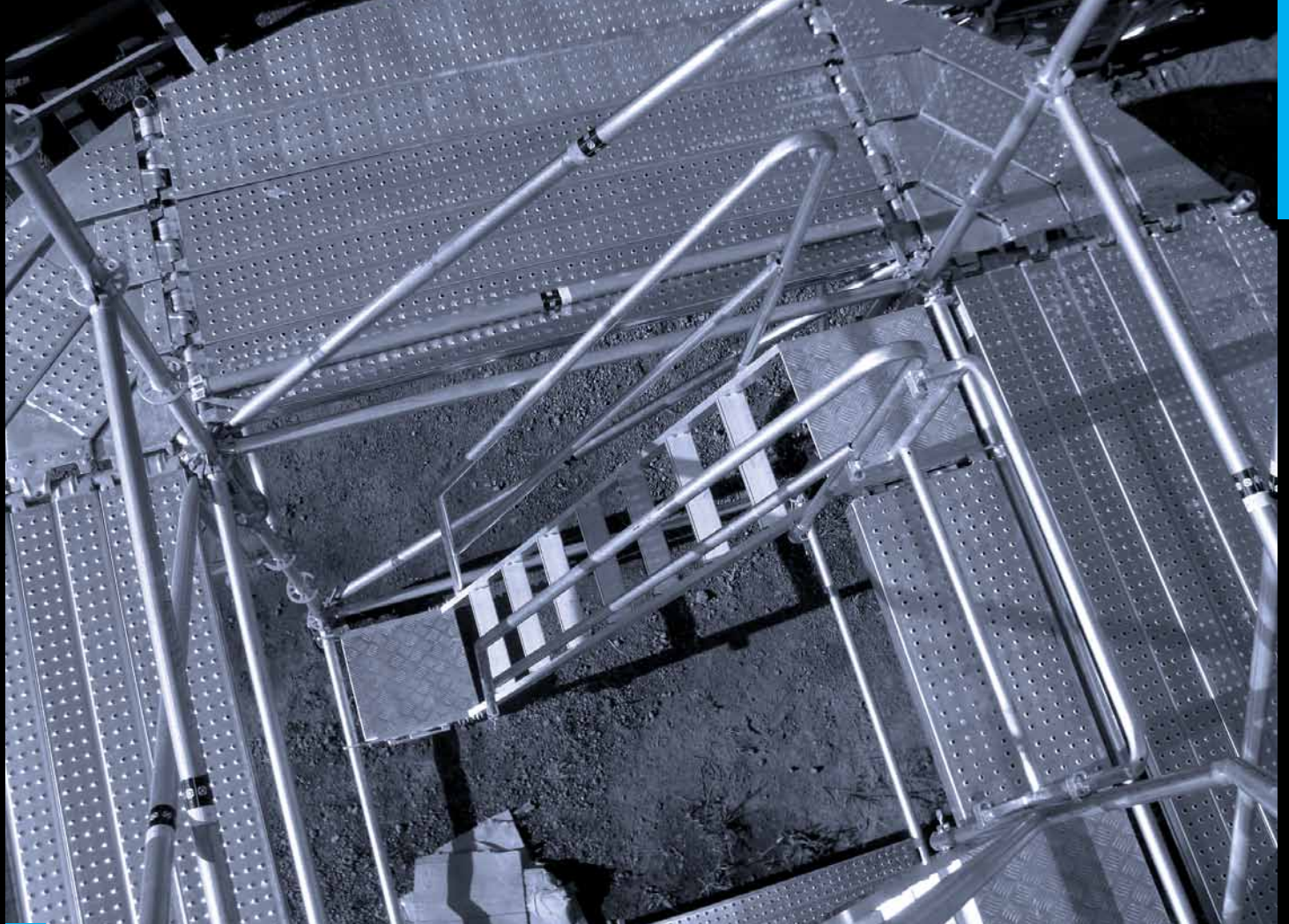
OFFICE
148 Dewbourne Ave., Toronto, Ontario M6C 1Z2

[T] 416.783.7500
[F] 905.248.3172
[E] info@proscaffna.c

WWW.PROSCAFFNA.COM

YARD/WAREHOUSE
1620 Claybar Rd., Ancaster, Ontario L9G 3L4

[T] 905.692.0133
[F] 905.692.2814



PROSCAFF

PAPER MILL DIGESTER SCAFFOLDING

INTRODUCTION

Faster shutdown maintenance and reduces labor costs.

The digester scaffolding is a versatile system that works with the ring/all-round system scaffolding.

The special platforms and brackets are efficiently erected on the scaffold system components, covering a range of digester diameters.

Advantages

ADVANTAGES

The platforms are a combination between the regular scaffold planks and special round planks that accommodate different diameters, ranging typically from 15ft to 18ft/4.5m to 5.5m.

The platforms are configured to follow the contour of the inside wall at 1.5"/4cm distance, ensuring a well decked area and robust working platform. Other dimensions of platforms are also available.

The number of items is reduced and easy to assemble. No extra plywood or wiring is necessary.

Main Components

RING/ALL-ROUND SYSTEM SCAFFOLD

- 2m/6'6" standards
- 2.13m/7' ledgers
- 2.13m/7' planks

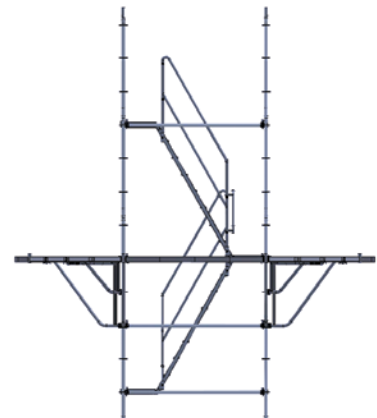
PERIMETER PLANK 2.13M/7FT

Erected along the 2.13m steel planks, follows the contour of the inside wall.



ALUMINUM STAIR

Erected inside the structure. Hooks insert directly into special intermediary planks.



CORNER PLANK

Erected at corners, works in combination with the corner perimeter plank.



CORNER PERIMETER PLANK

Erected at the corner, the corner perimeter plank follows the contour of the inside wall.



YARD/WAREHOUSE

1620 Claybar Rd., Ancaster, Ontario L9G 3L4

[T] 905.692.0133
[F] 905.692.2814

WWW.PROSCAFFNA.COM

MAIL

148 Dewbourne Ave., Toronto, Ontario M6C 1Z2

[T] 416.783.7500
[F] 905.248.3172
[E] info@proscaffna.com